

RECEIVED  
LARAMIE COUNTY  
CHEYENNE, WY.

NW CORNER Sec. 3 T17N R67W

CERTIFIED LAND CORNER RECORDATION 09 OCT 5 PM 3 01

DESCRIPTION OF CORNER EVIDENCE FOUND, AND ORIGINAL RECORD (if known)

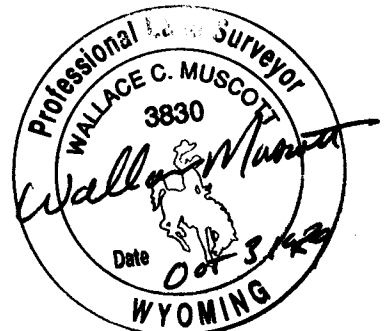
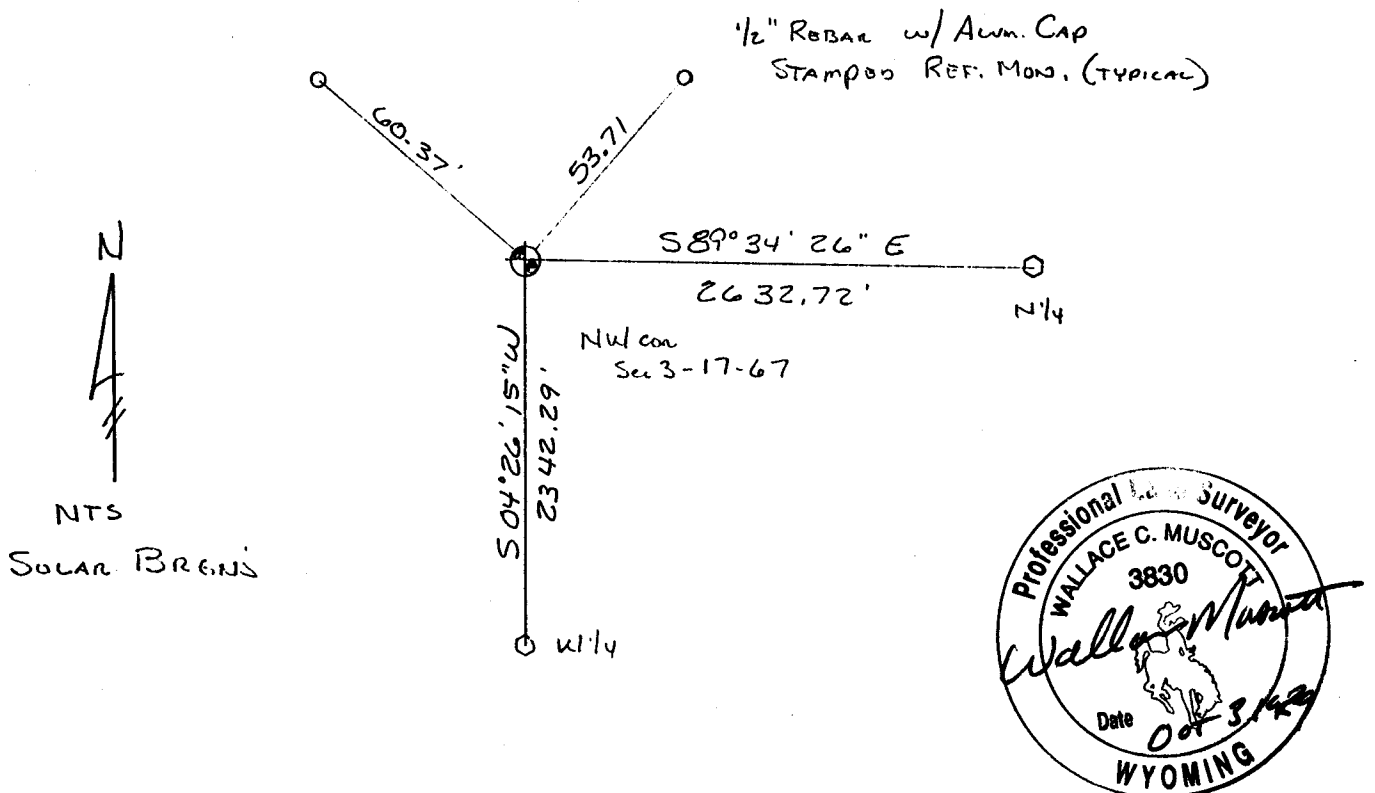
FOUND THE ORIGINAL STONE PER GLO NOTES AND PREVIOUS MONUMENT RECORD BY JOHN STEIL, LS 2500.

DESCRIPTION OF MONUMENT AND ACCESSORIES ESTABLISHED TO PERPETUATE THE ORIGINAL LOCATION OF THIS CORNER:

I REPLACED THE FOUND STONE WITH A 5/8" X 30" REBAR AND CORPUS OF ENGINEERS BRASS CAP, SET FLUSH WITH GROUND. I PLACED THE ORIGINAL STONE ALONG SIDE AND RAISE A MOUND OF STONE. SET REF. MON. AS SHOWN BELOW.

JUNE 21 1989

SKETCH, WITH COURSE AND DISTANCE TO ADJACENT CORNER IF DETERMINED IN THIS SURVEY. (May Sketch or Paste Reproduction on Reverse Side.)



I, Wallace C. Muscott certify that I have carefully performed or reviewed the work done on the diagrammed corner as reported on this recordation form and approve the same.

Wallace C. Muscott 3830  
Signature of Surveyor Registration No.

STATE OF WYOMING,  
Office of Clerk and Recorder,  
County of \_\_\_\_\_

This "corner record" was filed for record on the \_\_\_\_\_ day of \_\_\_\_\_, 19\_\_\_\_, was noted on the cross-index plat and is assigned page No. \_\_\_\_\_, in book No. \_\_\_\_\_.

County Official			
Cross Index No. <u>A-13</u>	T. <u>17N</u>	R. <u>67W</u>	<u>6th</u> Mer.
_____	T. _____	R. _____	Mer.
_____	T. _____	R. _____	Mer.
_____	T. _____	R. _____	Mer.
_____	T. _____	R. _____	Mer.
_____	T. _____	R. _____	Mer.
_____	T. _____	R. _____	Mer.